



lne.

Departement
Leefmilieu,
Natuur en
Energie



contents

- 1 Preface
- 4 Position of environmental policy in Flanders
- 6 Central Data Management Division
- 8 General Affairs, Communication and Legal Affairs Division
- 12 Environmental, Nature and Energy Policy Division
- 16 International Environmental Policy Division
- 20 Land and Soil Protection, Subsoil and Natural Resources Division
- 24 Air, Nuisance, Risk Management, Environment & Health Division
- 28 Environmental Integration and Subsidies Division
- 32 Management Support Services Division
- 36 Environmental Inspectorate Division
- 40 Environmental Licenses Division
- 44 Contact Directory

PREFACE

The Environment, Nature and Energy Department (LNE) is the environmental administration of the Flemish government. It is in charge of preparing, following up and evaluating the Flemish environmental policy. The structure of our department allows us to efficiently tackle all aspects of this multi-faceted task.

Air pollution, climate change, environmental nuisance and the impact of all types of pollution on the environment, man and the fauna and flora are currently the most important environmental issues that are being monitored in terms of both policy and operation.

Air pollution is a large-scale cross-border issue that has a multitude of causes. It has many harmful effects on man and the environment: particulate matter, ozone, heavy metals and different kinds of organic substances make the air we breathe increasingly unhealthy. Ozone also affects vegetation.

Substances such as sulphur oxides, nitrogen oxides and ammonia acidify our environment, and impoverish our ecosystems.

Cross-border issues require an international approach, which the Environment, Nature and Energy Department (LNE Department) is actively participating in. In this context, Flanders is developing measures for a large number of target groups and sectors. Moreover, we support local authorities, and raise people's awareness of numerous environmental issues.

Climate change, also known as the greenhouse effect or global warming, is caused by the emission of greenhouse gases, such as CO₂, methane and nitrous oxide. The use of fossil fuels by man is the most important source of emission. The greenhouse effect makes snow and ice caps melt and sea levels rise, and causes extreme weather conditions, such as hot winters and wet summers, to be much more frequent. At the same time, the depletion of the ozone layer which protects us against UV radiation continues. As a result of this, a growing number of people are developing skin cancer, among other things.

Our Department makes sure that Flanders complies with the international agreements and reduction objectives for global environmental issues. On the one hand it plays a coordinating role in the Flemish climate policy that requires extensive efforts from many policy areas and several sectors. In addition, the Department adopts a source-oriented approach to the emission of non-CO₂ greenhouse gases and ozone-depleting emissions through action programmes, legislation, sector agreements, awareness-raising campaigns, long-term planning and education.

Environmental nuisance is a problem which mainly manifests itself at the local level, and which many citizens are thus directly confronted with. The most common environmental complaints in Flanders relate to noise and odour nuisance, mainly caused by traffic, industrial activities,





pets, and activities of neighbours and the agricultural sector (as far as odour nuisance is concerned). Light, non-ionising radiation, smoke and dust also cause environmental nuisance.

We record the nuisance by coordinating the registration of environmental complaints. We prepare action programmes for the abatement of noise nuisance from airports, road traffic, railway traffic and industry, as well as protect the few quiet areas Flanders still has today.

A fourth important environmental issue is the negative impact of environmental disturbance on human health. In this respect we seek to attain a level which no longer poses any detriment to people's health, including that of vulnerable groups, such as the poor, the elderly and children. However, there is still great uncertainty on the impact of environmental pollution on human health. That is why the main goals of the LNE Department are to promote knowledge building in Flanders, and to help disseminate this knowledge.

We operate in many other fields as well.

We coordinate the drafting and implementation of the Flemish environmental policy plan and the annual environmental programmes. The environmental policy plan determines the main lines of the environmental policy to be pursued by the Flemish Region and the provinces and municipalities in matters of regional importance. The aim of the plan is to foster the effectiveness, efficiency and internal coherence of environmental policy at every level and in every field. Moreover, it provides a framework for cooperation with other policy areas and administrations. The plan also clearly explains to citizens, companies and organisations what they can expect during the planning period.

We also organise the programming of scientific research within the policy area.

Legal instruments play a very important – and probably the best well-known - role in environmental policy, the central focus being on environmental licences, accreditations and penal and administrative enforcement. In this respect our department guarantees an integrated and qualitative approach.

In terms of safety reporting, we are in charge of coordinating and implementing the aspect of "major-accident hazards involving dangerous substances" in the Flemish environmental policy. Through a high degree of specialisation we provide the expertise which other services can rely on. We have one particular goal in mind: to bring the level of industrial safety in Flanders to a high standard, and to promote it on a permanent basis in order to protect man and the environment against the risk of the accidental release of hazardous substances.

Environmental impact reporting is a legal-administrative procedure during which the environmental effects of an activity or intervention are studied, discussed and evaluated in advance in a scientifically justified manner. The basic principle is that it is better to adjust environmentally harmful activities (plans and projects) at an early stage in the decision-making process.

Through our area-specific policy activities we seek to optimally fit in environmental objectives and nature targets with the plans and implementation projects of other policy areas, such as town and country planning or economy. In this way we want to designate and manage the scarce Flemish space as efficiently as possible, to reduce environmental nuisance, to make cities more attractive and to provide sufficient

space for nature and green areas.

We are also responsible for the sustainable management of the soil and subsoil, with special focus on erosion control. Soil and subsoil are closely interrelated, and require the development of specific knowledge and expertise. Our services aim to optimally cooperate and integrate with the numerous actors involved.

Furthermore, we promote policy initiatives through a specific target-group policy; we are in charge of nature and environment education and ecological engineering; we subsidise projects and we provide for the fixed and regulated subsidies to environment and nature organisations, amongst others.

Besides, we act as the one stop-shop for environment, nature and energy to all international or supranational organisations and actors.

Central role

Finally, a few words about our position within the environment, nature and energy policy area in which our Department holds a key position. We, among other things, prepare and/or hold the presidency of the Policy Council, the Management Committees and the different task forces on which the agencies (OVAM, VMM, VLM, ANB, VREG, INBO) also have a seat. Our executive staff monitors the budget and personnel policy of the entire policy area, and tries to harmonise the actions as much as possible.

We are also active across the policy areas by participating in large-scale projects of the Flemish Government with regard to agriculture, economy and town and country planning, for instance, or by coordinating them.

This brochure shows you how our Department is organised and what we do. At the back you will find the contact information of all our divisions.

We work on a sustainable environment in a healthy society. For you. Together with you.

Jean-Pierre Heirman
Secretary-general

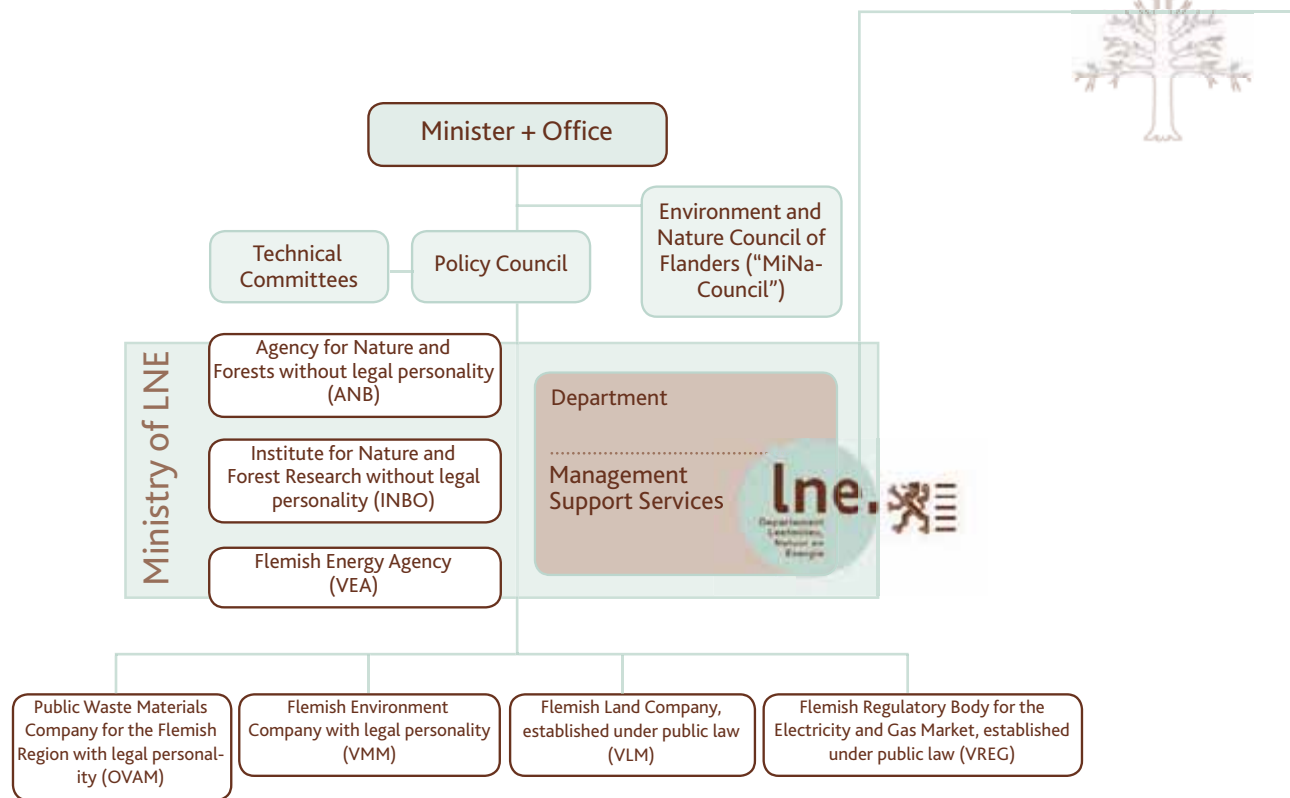


Position of environmental policy in Flanders

The Flemish **Ministry of Environment, Nature and Energy** consists of

- Department of Environment, Nature and Energy (abbreviated as LNE Department)
- Agency for Nature and Forests (ANB)
- Institute for Nature and Forest Research (INBO)
- Flemish Energy Agency (VEA).

Together with the Flemish Environment Company (VMM), the Flemish Regulatory Body for the Electricity and Gas Market (VREG) and the Public Waste Materials Company for the Flemish Region (OVAM), they constitute the **Environment, Nature and Energy Policy Area**.

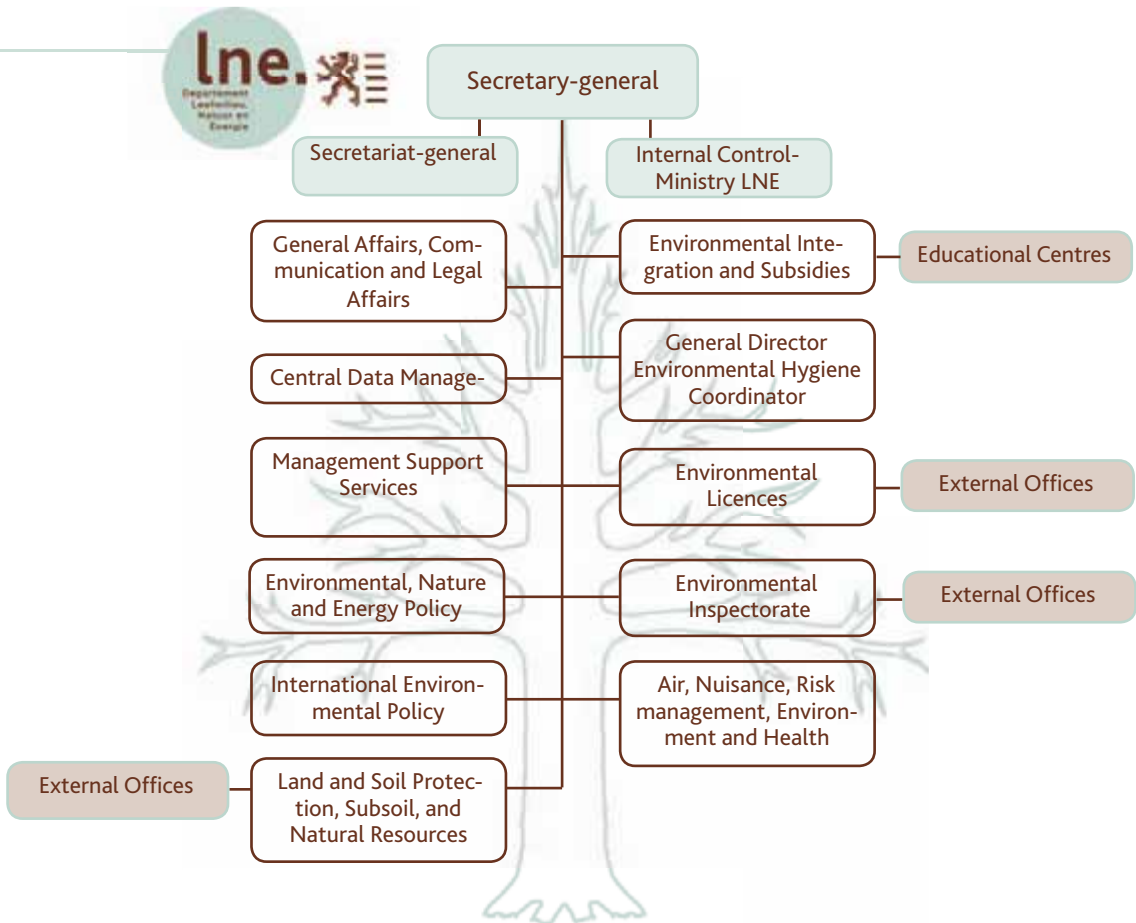


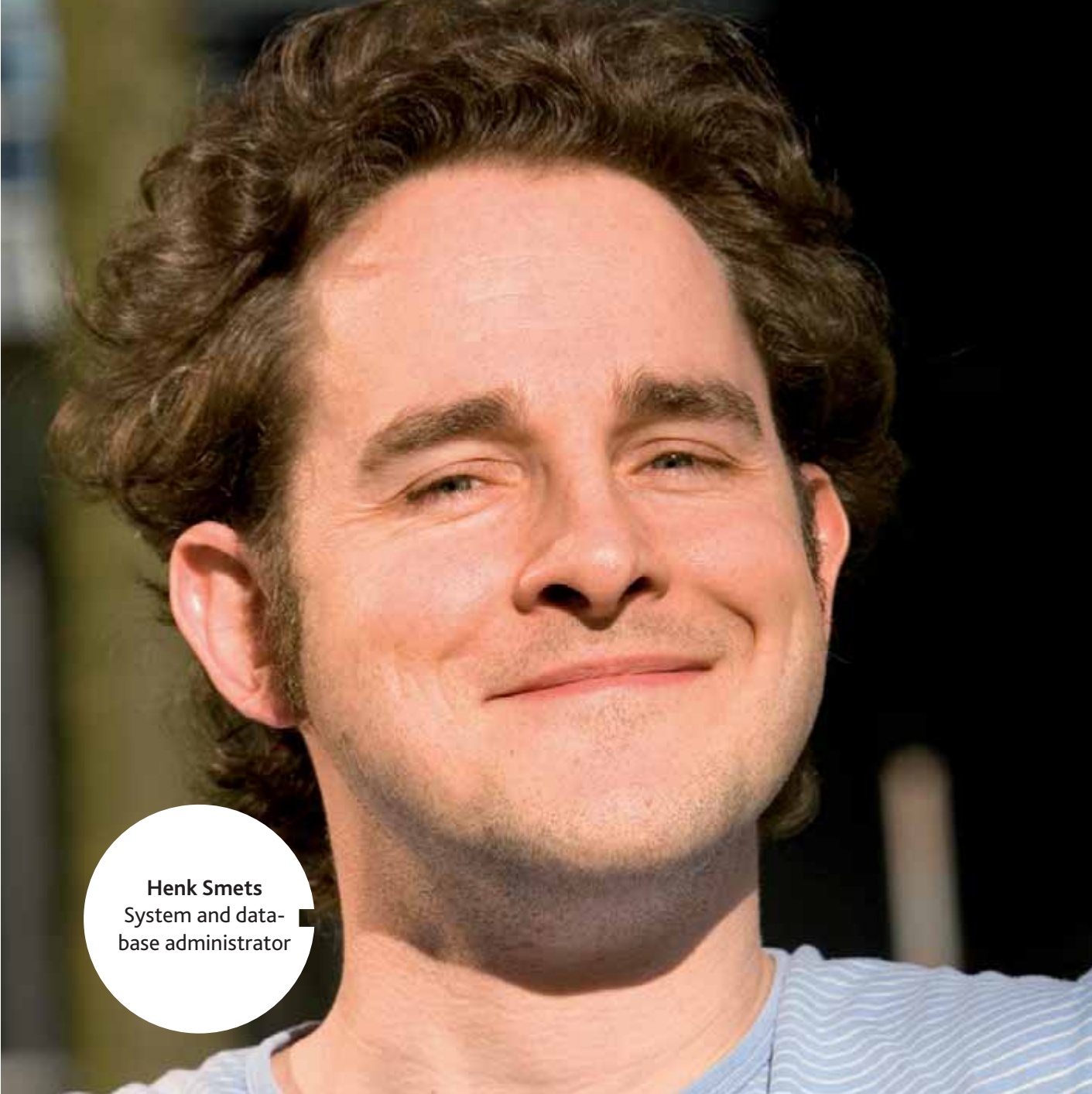
The **LNE Department** is composed of ten divisions - which are presented on the next few pages - and a secretariat-general.

The secretary-general is in charge of the department's general management.

To this end he is assisted by executive staff assistants for cross-divisional aspects concerning HRM, communication, budget and strategic policy. A separate unit guarantees the internal (financial) control of the Flemish Ministry of Environment, Nature and Energy.

Through the policy council and the management committees, where common or cross-policy area matters are transposed into projects, the secretariat-general is also in charge of streamlining policy which has a common ground with the agencies responsible for nature and forests, waste, water, soil, rural and manure issues, energy, etc.





Henk Smets
System and data-
base administrator

Central Data Management Division

This division supports the joint information systems of the environment, nature and energy policy area and the ICT services and applications of the different divisions of the LNE Department. It seeks to make the environmental information optimally available to all public bodies who need it as well as to the public at large which is entitled to it. In order to achieve this, the Central Data Management Division manages a number of common reference databases.

Information Management Service

Central Data Management

- digitally opens up all available and relevant environmental data at the level of the environment, nature and energy policy area
- manages the common reference databases
- is in charge of the environmental management information system (EMIS)
- is responsible for the integrated digital exchange of information between public environmental institutions on the one hand and companies, citizens and organisations on the other, through an Internet one-stop shop
- develops the ICT applications of the divisions of the Department LNE

ICT Service

- manages the technical infrastructure required for the operation of the information systems and the generic Internet one-stop shop
- provides ICT services to end users of the Department LNE, such as e-mail, Internet access and peripheral equipment



Hanne Decloedt
Web designer

General Affairs, Communication and Legal Affairs Division

This Division organises and coordinates the administrative work at the Department LNE. It streamlines the internal and external information channels, and makes sure that dossiers are properly dealt with. The Division acts as the exchange between the political level (the Minister's Office), the in-house and other administrative bodies and the citizens, for whom it is often the first point of contact.

It gives advice and provides effective services in the fields of communication, quality management, organisational development and legal affairs.

It handles complaints about the operation of the department and applications within the framework of open government. It is also responsible for the equal opportunities policy within the department.

General affairs, Communication and Legal Affairs

General Affairs and Quality Management Service

- coordinates the flow of information and dossiers
- ensures that communication between the Secretary-general, the Minister's Office, the Flemish Parliament and the divisions and agencies of the policy area passes off in an efficient and qualitative manner
- develops new visions on management, and is responsible for integrated quality management
- handles complaints from citizens about the operation of the department, and submits reports on this to the Flemish 'Ombuds' Service

Communication and Information Service

- is in charge of the department's internal and external communication
- provides communication advice



- manages the electronic info line for any questions from citizens to or about the department
- registers and coordinates any questions to the department with regard to open government

Legal Service

- provides legal support to the divisions of the LNE Department, the Minister's Office and certain agencies
- gives advice in concrete environmental dossiers, together with lawyers, as well as provides legal assistance in legal proceedings
- is responsible for amicable settlements, and defends the interests of the Flemish Region before administrative, civil and criminal courts

Beleidsdomein leefr



Zamen voor een leefbaar



energie





Annelies Hoebeek
Staff member,
Environmental
Impact Assessment

Environmental, Nature and Energy Policy Division

This Division is in charge of preparing the environmental, nature and energy policy, and coordinates the implementation and evaluation thereof.

Policy Preparation and Evaluation Service

- coordinates the drafting and implementation of the Flemish environmental policy plan and the annual environmental programmes as well as the contribution to the coalition agreement, the policy memorandum and the policy paper
- develops policy evaluation, and sets all kinds of indicators for it to meet
 - ensures the economic underpinning of environmental policy through a framework for economic considerations, which also outlines the broader socio-economic effects.
 - coordinates the programming of scientific research within the policy area
 - initiates new forms and aspects of policy that are long-term oriented (transition, innovation, scenarios, sustainable development projects)

**Environmental,
Nature and
Energy Policy**

Area-Specific Policy Service

- makes sure that environmental objectives and nature targets fit in optimally with the plans and implementation projects of other policy areas, such as town and country planning or economy (port areas, industrial estates, extraction zones, line infrastructures,...)
- monitors local and regional area-specific projects, and helps plan out the future of the countryside in Flanders
- coordinates the provision of advice on matters relating to town and country planning



Environmental Impact Assessment Service

- monitors and evaluates environmental impact assessments for projects, plans and programmes
- provides methodological support in the implementation of environmental impact assessments
- attends meetings of experts on environmental impact reporting within the European Union
- contributes to the Flemish regulations on environmental impact reporting
- gives advice on environmental impact reporting activities that take place outside Flanders, but may have environmental impact in Flanders

Safety Reporting Service

- contributes to the drafting and implementation of the Flemish regulations on the safety of Seveso establishments
- evaluates safety reports from Seveso establishments and safety reports in terms of town and country planning
- supports Seveso establishments in their safety policy so as to avoid the occurrence of major accidents or to make sure that the damage to man and the environment is limited
- attends meetings of experts on the safety of Seveso establishments within the European Union
- integrates the safety policy on Seveso establishments into the town and country planning policy





**Dieudonné
Nahigombeye**
Assistant,
International
environmental
policy

International Environmental Policy Division

This Division coordinates the inter- and supra-regional environmental policy for Flanders, and gives legal, thematic and process-oriented advice on the preparation and implementation of European and multilateral environmental dossiers.

The International Environmental Policy Division detects new European and multilateral environmental issues as early as possible, and appoints expert civil servants who can follow up these matters for Flanders.

It keeps abreast of European and multilateral transversal environmental issues. These are coordinating issues which other policy texts or regulations often refer to, such as the public nature of environmental information, environmental damage, sustainable development, the Services Directive, etc...

International Environmental Policy Division

After the new regulation has been formally adopted, the Division follows up the agreements made at European and multilateral level, ensures the transposition of European environmental directives into Flemish regulation, and settles any disputes with the European Union about the environment.

Furthermore, we coordinate the consultation about the inter- and supra-regional environmental policy. This includes the consultation within the Department LNE and with other Flemish public bodies (f.e. the Flemish International Environmental Policy Consultation (VOIM)), as well as any contacts with the other Regions and the federal government (such as the Belgian Coordination Committee for International Environmental Policy (CCIM) and the Interministerial Conference for the Environment (ICL)). Finally, the Division acts as the Flemish one-stop shop for any contacts with European and multilateral environmental bodies, amongst others through the Flemish environment attaché with the Permanent Representation of Belgium to the European Union.



In order to perform its coordinating task, the International Environmental Policy Division has four services:

Multilateral Environmental Policy Service

- coordinates the environmental issues that are ongoing in different multilateral organisations, such as the United Nations and the OECD

European Environmental Policy Service

- coordinates the environmental issues within the European Union

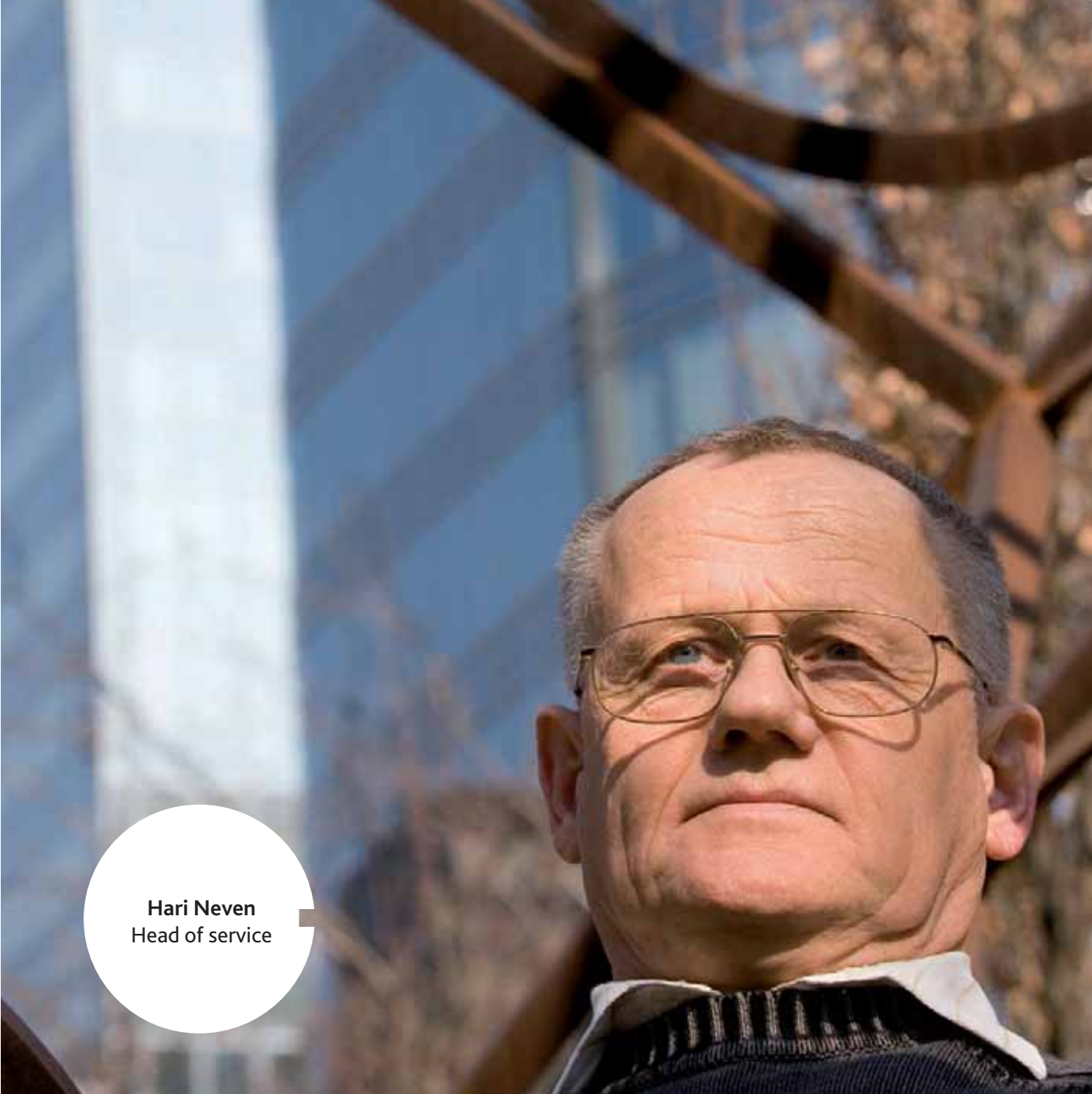
Bilateral and Interregional Environmental Policy Service

- maintains direct contact with other countries and regions in the world in environmental matters

International Environmental Regulation and Legal Disputes Service

- coordinates the transposition of European environmental regulation into Flemish regulation
- settles disputes with the EU in environmental matters
- follows up multilateral agreements, such as the ratification and funding of multilateral environmental treaties



A low-angle portrait of Hari Neven, a middle-aged man with short grey hair and glasses, looking upwards. He is wearing a dark sweater over a white collared shirt. The background is a blurred outdoor setting with a blue sky and a brown metal structure.

Hari Neven
Head of service

Land and Soil Protection, Subsoil, and Natural Resources Division

This Division is responsible for the sustainable management, the monitoring and the protection against pollution and damage to the soil. The valorisation of natural resources is also one of its tasks. In addition, it coordinates the cooperation project "Flanders Subsoil Database".

Land and Soil Protection Service

Focuses its activities on the protection of the soil against damage resulting from erosion, landslides, loss of organic matter, compaction and loss of basic soil functions.

Land and Soil Protection, Subsoil and Natural Resources

The Service

- supports councils in drawing up municipal erosion control plans and in starting erosion control works
- gives advice on management agreements between farmers and the Flemish Land Company, and manages the budgets
- is responsible for policy preparation and budget management in land use and land consolidation projects
- supports the integration of soil protection into the agricultural policy, landscape conservation, and the prevention of sediment input to the water system, among other things



Main service Natural Resources and the two external offices

The main service “Natural Resources” and the two external offices are responsible for policy preparation and implementation with regard to the valorisation of the subsoil.

- gathers and disseminates knowledge about the Flemish subsoil
- monitors the sustainable provision and the related socially responsible extraction of surface minerals
- follows up the implementation of the general surface minerals plan and the special minerals plans for the different minerals and of the Flemish Parliament Acts on Surface Minerals and Gravel
- gives thematic and technical advice for quite some policy issues, instruments and projects
- develops a vision on the future use and the concrete follow-up of extraction areas, as extraction is in any case a temporary activity

Flanders Subsoil Service

- coordinates and supports the cooperation project “Flanders Subsoil Database”
- develops an optimal ICT environment to support cooperation between the current partners, to further extend the cooperative venture, and to make available all information about the Flemish subsoil through a user-friendly one-stop shop





Mirka Van der Elst
Staff Member,
Air quality

Air, Nuisance, Risk Management, Environment & Health Division

This Division prepares and evaluates the policy of the Flemish Minister for Environment around four major environmental issues: air pollution, climate change, environmental nuisance and the impact of pollution on human health.

Air and Climate Service

- devises measures to tackle air pollution caused by noxious substances, such as particulate matter, ozone and heavy metals. This approach is oriented towards different target groups, such as road, air and maritime traffic, stock breeding, domestic space heating and many industrial sectors, such as electricity producers, oil refineries, chemical industry, steel industry, printing businesses, automobile industry and brick industry
 - supports local authorities in their approach to air pollution.
 - raises, together with the Communication and Information Service, people's awareness of less polluting vehicles, environmentally friendly driving, efficient use of heaters and asbestos pollution, and encourages them to no longer burn waste
- coordinates the Flemish climate policy, and ensures that Flanders meets the international agreements and reduction objectives concerning greenhouse gas emissions and ozone depleting substances
- adopts a source-oriented approach towards the emission of non-CO2 greenhouse gases and ozone depleting emissions through action programmes, legislation, sector agreements and awareness-raising campaigns in which emissions trading occupies a special position

**Air, Nuisance,
Risk Manage-
ment, Environ-
ment & Health**




Environment and Health Service

- helps to limit the negative effects of the disturbance of the environment on human health
- fosters the development of knowledge about environment and health in Flanders, and helps disseminate it
- assists the Environment and Health Support Centre in major projects, such as the human biomonitoring programme (research into the exposure of man to noxious substances, such as heavy metals, pesticides,...)
- proposes measures on the basis of the human biomonitoring result

Nuisance and Risk Management Service

- records the environmental nuisance such as noise, odour, light, smoke and dust nuisance by centralising information about environmental complaints, by asking the people for information through surveys, by drawing up noise maps, and by carrying out noise measurements
- draws up action programmes to reduce noise nuisance from airports, road traffic, railway traffic and industry
- develops measures for the protection of the scarce quiet areas in Flanders
- develops measuring methods, and establishes odour standards for several sectors in order to abate odour nuisance
- coordinates actions around the abatement of other forms of nuisance, such as light nuisance



A low-angle portrait of a man with a shaved head and light stubble, wearing a dark blue t-shirt. He is looking slightly upwards and to the right. The background features a modern glass skyscraper with a prominent vertical glass-enclosed elevator shaft. A white flagpole is visible in the foreground, and a smaller flagpole with a gold ball top is in the background. The sky is clear and blue.

Wouter Mertens
Staff member,
Nature and environ-
ment education

Environmental Integration and Subsidies Division

This Division seeks to integrate the nature and environmentally friendly heritage into Flemish society. To this end it applies several instruments, such as subsidies, nature and environment education and awareness-raising, ecological engineering and agreements, oriented towards different target groups.

Service for Subsidisation and Cooperation Agreements with Local Authorities

- checks/coordinates relevant LNE-oriented subsidy dossiers, the subsidy applications from accredited nature and environment associations, the projects fund, DAC and ad hoc subsidies. Is in charge of the financial follow-up and processing thereof
 - advises the Minister for Environment on the award of certificates for increased investment deduction for research and development
 - follows up and implements the cooperation agreements with the councils and provinces

Environmental Integration and subsidies

Service for Target Group Policy and Nature and Environment Education

- looks for mechanisms to involve industry, the agricultural sector and consumers in the policy
- supports, promotes and carries out all kinds of nature and environment education projects and initiatives for education, the youth sector and adult work and training
- coordinates nature and environment education networking in Flanders
- provides in three centres an innovating educational programme and a range of training activities



Ecological Engineering Service

Tries to integrate ecology into the infrastructure, and is actively involved in the nature-friendly planning, layout, implementation and management of road and hydraulic works.

- produces manuals, organises workshops and courses for the target group of designers and managers of transport infrastructure
- initiates its own (trial) projects, and follows them up
- puts out study contracts to tender, and draws up documents for policy preparation

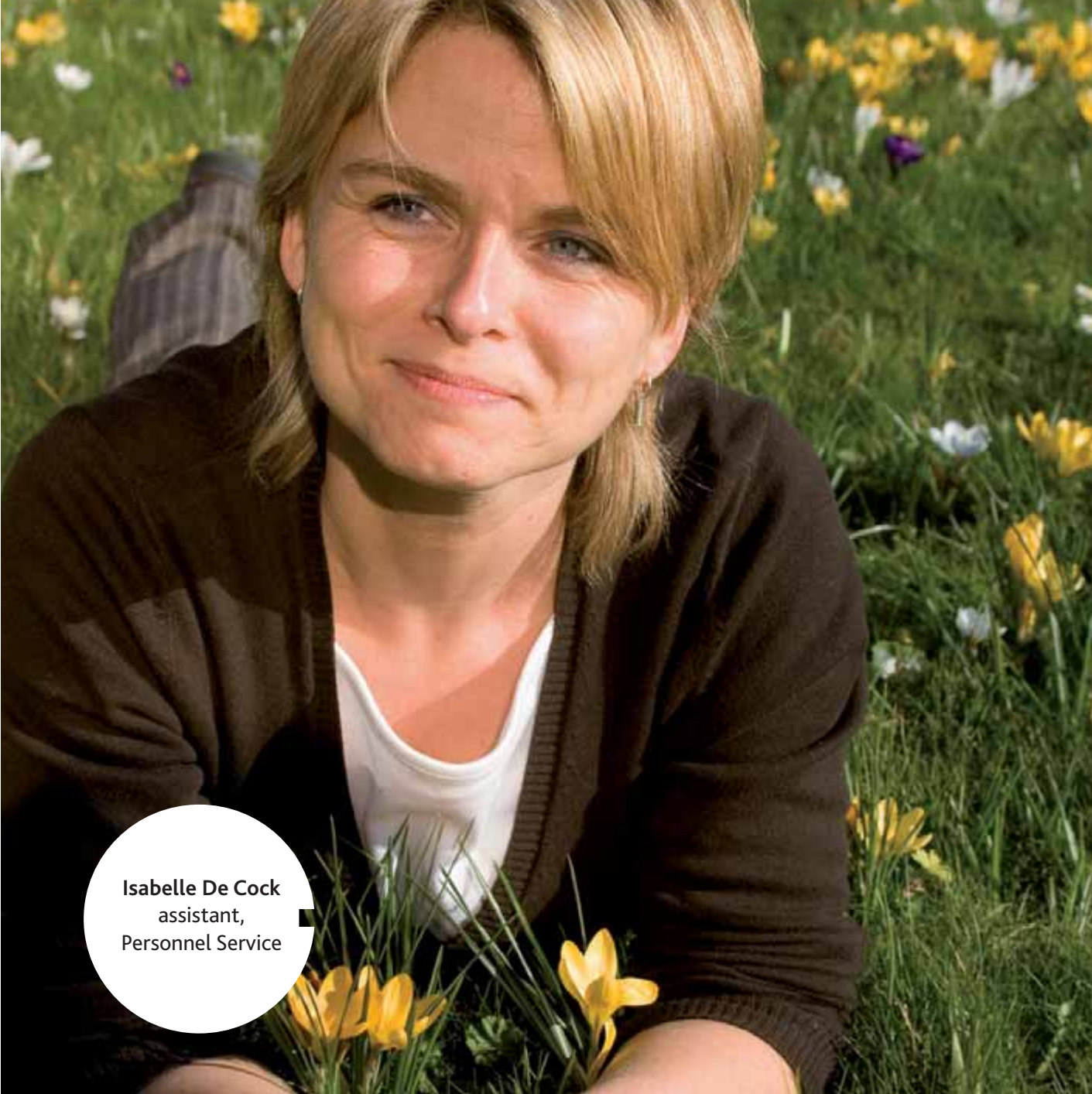
Internal Green Housekeeping Service

- develops policy initiatives and actions to have Flemish and local authorities work in a more environmentally and energy-friendly manner
- acts as the link between the content experts of the policy area and the public services that can put recommendations in the field of green housekeeping into practice
- coordinates green housekeeping actions
- raises the awareness of civil servants and specific target groups, such as public purchasers and building administrators through training initiatives and communication actions

Service for the Support and Monitoring of EIR/SR

- monitors, advises and supports councils, provinces and the Flemish Region in strategic and project EIR processes and reporting on safety in terms of planning





Isabelle De Cock
assistant,
Personnel Service

Management Support Services Division

This Division provides a wide range of services within the environment, nature and energy policy area. Its customers are the divisions of the Department LNE itself, the Flemish Regulatory Body for the Electricity and Gas Market (VREG), the Agency for Nature and Forests, the Institute for Nature and Forest Research, the Flemish Energy Agency and the Secretariat of the Environment and Nature Council of Flanders (MiNa Council). Both individual staff members and line managers can call on these services.

Personnel Service

Management Support Services

Carries out any tasks relating to staff and organisation.

The responsibilities of the different teams include:

- recruitment and selection of new staff members
- follow-up of staff movements
- administration of leaves
- payment of salaries, fees and allowances, including family allowance
- follow-up of the trade union statute
- organisation of training and competence management
- follow-up of work-related accidents
- monitoring of change and improvement processes
- digital processing of personnel data
- organisation of the award of decorations
- commuter traffic and official trips
- occupational medicine



Accounting, Budget and Finance Service

Supports the financial management of the department and the agencies. The Service is the central, in-house contact point for matters relating to accounting, budget and finance.

- General accounting
 - implementation of the appropriations in the general budget
 - registration in the accounts of commitments of appropriations
- payment of invoices and claims
- registration in the assets accounts of inventory and heritage management
- accounts of the “FFEU” (Financing Fund for Debt Reduction and One Off Investment Expenses) and the “Grindfonds” (Gravel Fund)
- Accounts of the MINA Fund
 - correct and timely processing in terms of accounting of the submitted financial dossiers
 - financial analysis and reporting on the implementation of the MINA Fund budget
 - cash budget accounting: follow-up of change projects
- Budget and finance
 - input of required/available budgets
 - allocation decrees
 - exchange of budget information
 - follow-up of dossiers, historical data, archives
 - application management – help desk management
 - follow-up of VAT administration, interests on arrears
 - support in terms of content for all kinds of reports
 - coordination with Internal Control, Department, Court of Audit
 - input of data for the drafting of annual reports

Logistics, Buildings and Reception Service

- purchase, rent or lease of different goods
- ordering of books and documentation
- telephony management
- various logistic services



Robert Baert,
Head of division

Environmental Inspectorate Division

This is the Flemish enforcement body of the environmental hygiene legislation which seeks to increase the quality of enforcement by taking efficient, expert, uniform, integrated and steering action throughout Flanders. Within the framework of the Flemish decree on Environmental Licences and Vlarem I, the Division's civil servants exercise supervision over large potentially environmentally-harmful businesses (in technical jargon: category I nuisance-causing establishments). They support councils in their enforcement powers for the less potentially polluting plants (categories 2 and 3 nuisance-causing establishments), and exercise "high supervision" over them. These powers are even extended by enforcement powers laid down in related environmental hygiene laws. The Division advises the Flemish Minister for Environment on the practicability and enforceability of regulations and the concrete fleshing out of policy goals, and as such contributes to policy preparation and evaluation.

Environmental Inspectorate

The Environmental Inspectorate Division adapts to this sizable task and to the multitude and complexity of the regulation through a double internal structure: a traditional vertical structure and a horizontal structure in the form of task forces for each environmental compartment.

The traditional vertical structure consists of the central administration, a Service for the Supervision of High-Risk Companies (Seveso establishments) in Brussels and five external offices in the capitals of the Flemish provinces.

The central administration:

- plans and coordinates inspection campaigns and detection actions throughout Flanders. The task forces play a key role in this: they tune the inspection activities in the different



environmental hygiene sectors to one another so as to achieve high quality integrated control

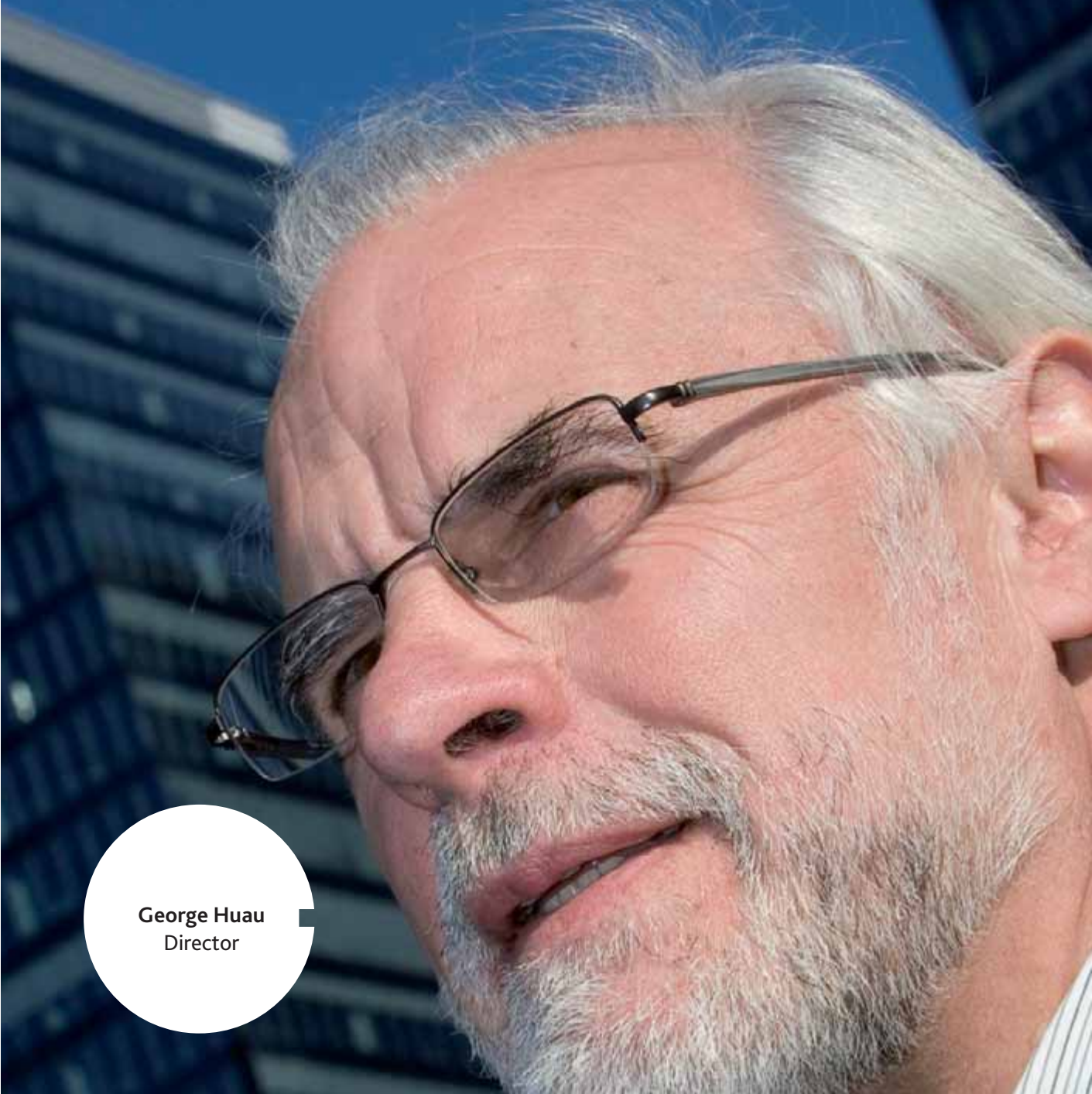
- maintains the supra-regional contacts with regard to environmental enforcement, and actively keeps abreast of international innovations and trends

■ regularly does the final editing of the texts on the Division's activities, among other things by means of the environmental enforcement report and the environmental inspection plan

The external offices and the Service for the Supervision of High-Risk Companies

- are in charge of specific inspection assignments and the resulting measures
- impose measures for environmental clean-up
- keep all company records
- give feedback on the experiences in the field





George Huau
Director

Environmental Licences Division

This Division prepares and evaluates the environmental licence and accreditation policy. Our expert working groups are in charge of:

- *drawing up, updating and evaluating the Flemish Parliament Act on Environmental Licences and the Vlare I regulation;*
- *drawing up, updating and evaluating environmental standards and conditions laid down in the Vlare II regulation, taking account of the Best Available Techniques;*
- *developing codes of good practice.*

In environmental licence dossiers we give advice to the licensing authorities and to various environmental licence committees. The Division also regulates the operation of the Regional Environmental Licence Commission of which it holds the presidency and the secretariat.

We provide and coordinate the provision of advice in accreditation dossiers, and accredit the equivalence of methods.

In addition, we are responsible for the practical implementation of the legislation on the in-house green housekeeping policy and the integration of the safety and environmental impact reporting into the licence policy.

Within the framework of the area-specific policy, advice is given on Spatial Implementation plans and on planning certificates.

The Environmental Licences Division operates centrally from the central administration in Brussels which is composed of three services as well as, decentralized, from five provincial external offices.

**Environmental
Licences**



Service for the Legal and Technical Support to the Licence Policy

- provides legal, technical and administrative support to the environmental licence and accreditation policy

Environmental Licence Policy Service

- advises on the appeal cases treated at the Regional Environmental Licence Commission
- advises on derogation requests and on appeals against coercive measures
- handles dossiers for the approval of the use of Genetically Modified Organisms

Best Available Techniques and Accreditations Service

- follows up the evolution of best available techniques
- formulates proposals to adjust Vlarems requirements
- handles different types of accreditation dossiers, including:
 - external environmental coordinators
 - environmental impact assessments and safety reports
 - environmental experts (except for soil sanitation experts)
 - burner technicians, fuel oil technicians, cold-storage engineers,...
 - air and water laboratories.

The 5 provincial external offices

- give advice on category I environmental licence dossiers in the first instance and on category II appeal dossiers

- give advice on soil sanitation dossiers, spatial implementation plans, planning certificates, ...
- provide first line assistance in the stage preceding the environmental licence applications
- advise on EAGGF aid dossiers
- provide advice on the Vlarem regulation to all stakeholders

contact directory

Secretariaat-generaal (Secretariat-General)

Secretaris-generaal: Jean-Pierre Heirman
Koning Albert II-laan 20, bus 8
1000 Brussel

T (32)2.553.80.16

F (32)2.553.80.05

secretariaat-generaal@lne.vlaanderen.be

General director: Paul Van Snick

Afdeling Algemene Zaken, Communicatie en Juridische Dienst (General Affairs, Communication and Legal Affairs Division)

Jan Heyman

Koning Albert II-laan 20, bus 8

1000 Brussel

T (32)2.553.80.48

F (32)2.553.14.98

algemene.zaken@lne.vlaanderen.be

Afdeling Managementondersteunende Diensten (MOD)

(Management Support Services Division)

Lieve Vandecasteele

Koning Albert II-laan 20, bus 8

1000 Brussel

T (32)2.553.72.64

F (32)2.553.72.07

mod@lne.vlaanderen.be

Afdeling Milieu-, Natuur- en Energiebeleid

(Environmental, Nature and Energy Policy Division)

Koen De Smet

Koning Albert II-laan 20, bus 8

1000 Brussel

T (32)2.553.03.55

F (32)2.553.80.06

beleid@lne.vlaanderen.be

Afdeling Internationaal Milieubeleid (International Environmental Policy Division)

Remy Merckx

Koning Albert II-laan 20, bus 8

1000 Brussel

T (32)2.553.81.57

F (32)2.553.81.65

internationaal@lne.vlaanderen.be

Afdeling Centraal Databeheer (Central Data Management Division)

Dirk Vyverman

Koning Albert II-laan 20, bus 8

1000 Brussel

T (32)2.553.11.55

F (32)2.553.02.14

informatiebeheer@lne.vlaanderen.be

Afdeling Milieu-integratie en -subsiëringen (Environmental Integration and Subsidies Division)

Marc Cherretté

Koning Albert II-laan 20, bus 8

1000 Brussel

T (32)2.553.80.56

F (32)2.553.80.55

milieu-integratie@lne.vlaanderen.be

Natuur- en Milieueducatiecentrum De
Helix

(Nature and Environment Education Centre)

De Helix

Hoogvorst 2

9506 Grimminge

T (32)54.31.79.50

F (32)54.31.79.88

dehelix@lne.vlaanderen.be

Natuureducatiecentrum De Vroente

Putsesteenweg 129

2920 Kalmthout

T (32)3.620.18.30

F (32)3.620.18.35

devroente@lne.vlaanderen.be

Afdeling Lucht, Hinder, Risicobeheer, Milieu & Gezondheid (Air, Nuisance, Risk Management, Environment and Health Division)

Bob Nieuwejaers

Koning Albert II-laan 20, bus 8

1000 Brussel

T (32)2.553.11.20

F (32)2.553.11.45

lucht.hinder.gezondheid@lne.vlaanderen.be

Afdeling Milieuvergunningen (Environmental Licences Division)

Paul Bernaert

Koning Albert II-laan 20, bus 8

1000 Brussel

T (32)2.553.79.97

F (32)2.553.79.95

milieuvergunningen@lne.vlaanderen.be

Buitendienst Oost-Vlaanderen (External Office East Flanders)

Apostelhuizen 26K

9000 Gent

T (32)9.235.58.20

F (32)9.235.58.49

milieuvergunningen.ovt@lne.vlaanderen.be

Buitendienst West-Vlaanderen
(External Office West Flanders)

8200 Brugge

T (32)50.40.43.11

F (32)50.39.10.51

milieuvergunningen.wvl@lne.vlaanderen.be

Buitendienst Vlaams-Brabant
(External Office Flemish Brabant)

Waaistraat 1

3000 Leuven

T (32)16.21.11.00

F (32)16.21.11.11

Milieuvergunningen.vbr@lne.vlaanderen.be

Buitendienst Limburg
(External Office Limburg)

Koningin Astridlaan 50, bus 5

3500 Hasselt

T(32)11.74.25.80

F (32)11.74.25.99

milieuvergunningen.lim@lne.vlaanderen.be

Buitendienst Antwerpen
(External Office Antwerp)

Lange Kievitstraat 111-113 bus 61

2018 Antwerpen

T (32)3.224.64.81

F (32)3.224.64.51

milieuvergunningen.ant@lne.vlaanderen.be

Afdeling Milieu-inspectie
(Environmental Inspectorate Division)

Robert Baert

Koning Albert II-laan 20, bus 8

1000 Brussel

T (32)2.553.81.83

F (32)2.553.80.85

milieu-inspectie@lne.vlaanderen.be

(External Office East Flanders)

Apostelhuizen 26K

9000 Gent

T (32)9.235.58.50

F (32)9.235.58.79

milieu-inspectie.ovl@lne.vlaanderen.be

Buitendienst West-Vlaanderen
(External Office West Flanders)

8200 Brugge

T (32)50.40.42.11

F (32)50.39.15.12

milieu-inspectie.wvl@lne.vlaanderen.be

Buitendienst Vlaams-Brabant
(External Office Flemish Brabant)

3000 Leuven

T (32)16.21.11.50

F (32)16.21.11.51

milieu-inspectie.vbr@lne.vlaanderen.be

Buitendienst Limburg
(External Office Limburg)

3500 Hasselt

T (32)11.74.26.00

F (32)11.74.26.29

milieu-inspectie.lim@lne.vlaanderen.be

Buitendienst Antwerpen
(External Office Antwerp)

Lange Kievitstraat 111-113 bus 62

2018 Antwerpen

T(32)3.224.64.25

F (32)3.224.64.28

milieu-inspectie.ant@lne.vlaanderen.be

Afdeling Land en Bodembescherming,
Ondergrond, Natuurlijke Rijkdommen
(Land and Soil Protection, Subsoil, and
Natural Resources Division)

Marnix De Vrieze

Koning Albert II-laan 20 bus 20

1000 Brussel

T (32)2.553.21.86

F (32)2.553.21.85

land@lne.vlaanderen.be

Ondergrond Vlaanderen
(Subsoil Flanders)

Tramstraat 52

9052 Zwijnaarde

T (32)9.240.75.11

F (32)9.240.75.00

ondergrond@lne.vlaanderen.be

Natuurlijke Rijkdommen
(Natural Resources)

Koning Albert II-laan 7, bus 8

1210 Brussel

T (32)2.553.46.41

F (32)2.553.46.01

natuurlijkerijkdommen@lne.vlaanderen.be

Buitendienst Antwerpen en Limburg
(External Office Antwerp and Limburg)

Koningin Astridlaan 50, bus 6

3500 Hasselt

T (32)11.74.27.30

F (32)11.74.27.49

natuurlijkerijkdommen.hasselt@lne.vlaanderen.be

Buitendienst Vlaams Brabant, Oost- en West-
Vlaanderen
(External Office Flemish Brabant, East and
West Flanders)

Elfulistraat 39b, blok A

9000 Gent

T (32)9.244.66.66

F (32)9.220.07.98

natuurlijkerijkdommen.gent@lne.vlaanderen.be



Environment, Nature and Energy Department
Koning Albert II - laan 20 bus 8 - 1000 Brussel
Telephone: (32)2 553 80 11 - Fax: (32)2 553 80 05 - info@lne.be - www.lne.be